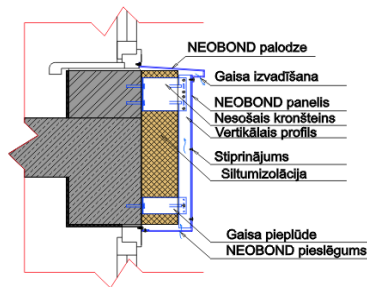


Technology

External wall insulation with NEOBOND panels or façade cassettes is carried out according to the method of a hinged ventilated façade, i.e. between the facing and insulation of the walls there is a space of 2-3 cm, creating air ducts. Due to ventilation, even under adverse Latvian climatic conditions, the ventilated façade allows the walls to “breathe” and at the same time always leaves the inner layer of insulation dry.

The ventilated façade system is mounted starting with external structures. Bearing brackets are mounted on the walls, between which the insulating material is placed - usually stone wool, sometimes extruded polystyrene.

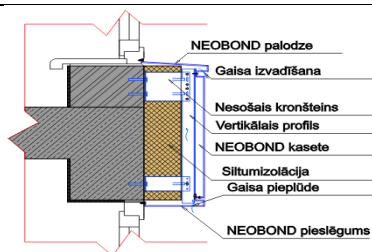
The supporting T or L aluminium profiles are attached to the supporting structures. Due to alignment, a direct hinged façade is created, which visually improves the appearance of the building. NEOBOND façade panels are attached to the installed framework. There are two main types of finishing: with panels or cassettes.



Façade finishing with panels

Façade finishing panels are manufactured in accordance with the required dimensions. Sheet joints (about 3-10 mm) can be left free, fixed with an H-shaped profile. Other coloured materials for the formation of seams can be used.

Plates can be made in several ways: in the form of decorative boards, whole sheets, folding decorative elements, etc.



Façade finishing with cassettes

Volumetric façade cassettes are manufactured according to the developed technology. At the junction of the cassettes a seam is formed, and the appearance is visually divided into fragments. The installation method allows you to hide all fasteners.